



ACN 092 471 513

Wednesday 23 June 2010

ASX Release

Please refer to the attached announcement lodged with the ASX by FYI Resources Limited regarding wide zones of uranium mineralisation intersected in initial drilling at the Yarlalweelor Uranium Project in Western Australia.

Empire Resources Ltd owns 32% of FYI Resources Ltd.

For further information on the Company, visit www.resourcesempire.com.au

David Sargeant – Managing Director
Adrian Jessup – Executive Director

Phone: +61 8 9361 3100
Phone: +61 8 9361 3100

Wednesday 23 June 2010

ASX Release

WIDE ZONES OF URANIUM MINERALIZATION INTERSECTED IN INITIAL DRILLING AT W.A. URANIUM PROJECT

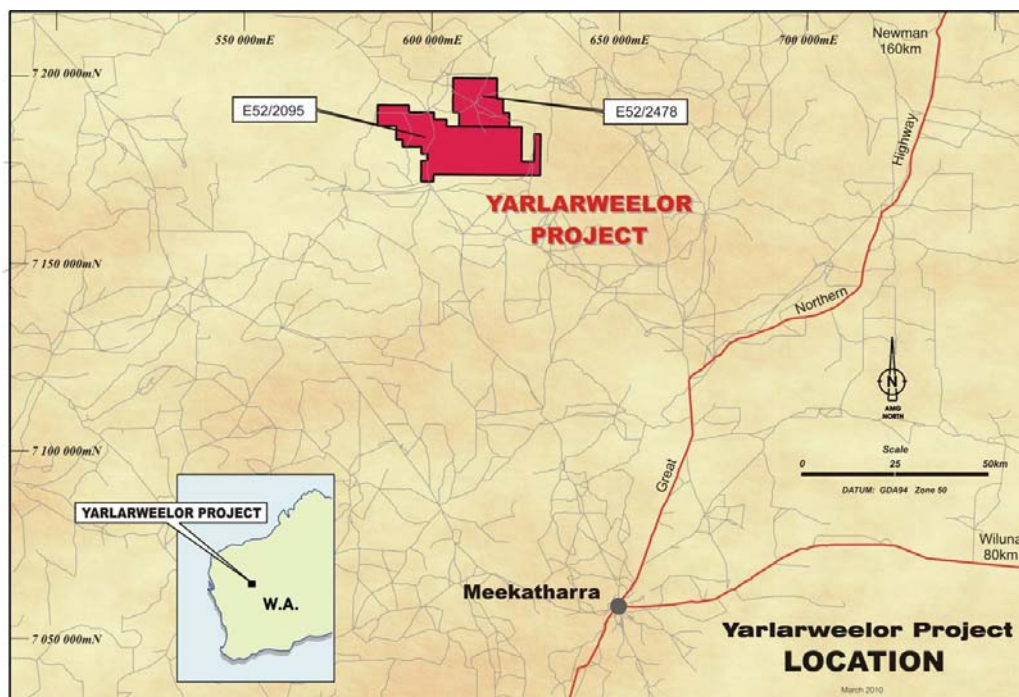
- 35m @ 503ppm U_3O_8 including 5m @ 1,069ppm U_3O_8
- 7.8m @ 588ppm U_3O_8 including 1m @ 1,873ppm U_3O_8

Assay results in excess of 1,800 parts per million (ppm) uranium oxide (U_3O_8) have been identified in the first diamond drilling program on the Yarlarweelor uranium project in Western Australia by owner, FYI Resources Limited (ASX code: "FYI")

Directors of FYI are pleased to announce the results today, from the first two of an initial four hole diamond core drilling program undertaken at Yarlarweelor, 125 km north of Meekatharra.

The four holes have now been completed, with three holes drilled at the Kangaroo Ridge prospect and one at the Doris prospect.

Assay results released today are from the first two holes, KRD10-01 and KRD10-02, both drilled at Kangaroo Ridge. These holes intersected wide zones of uranium mineralization associated with biotite rich shear zones in granite, confirming the presence of significant uranium mineralization at Yarlarweelor, first identified in the area more than 30 years ago.



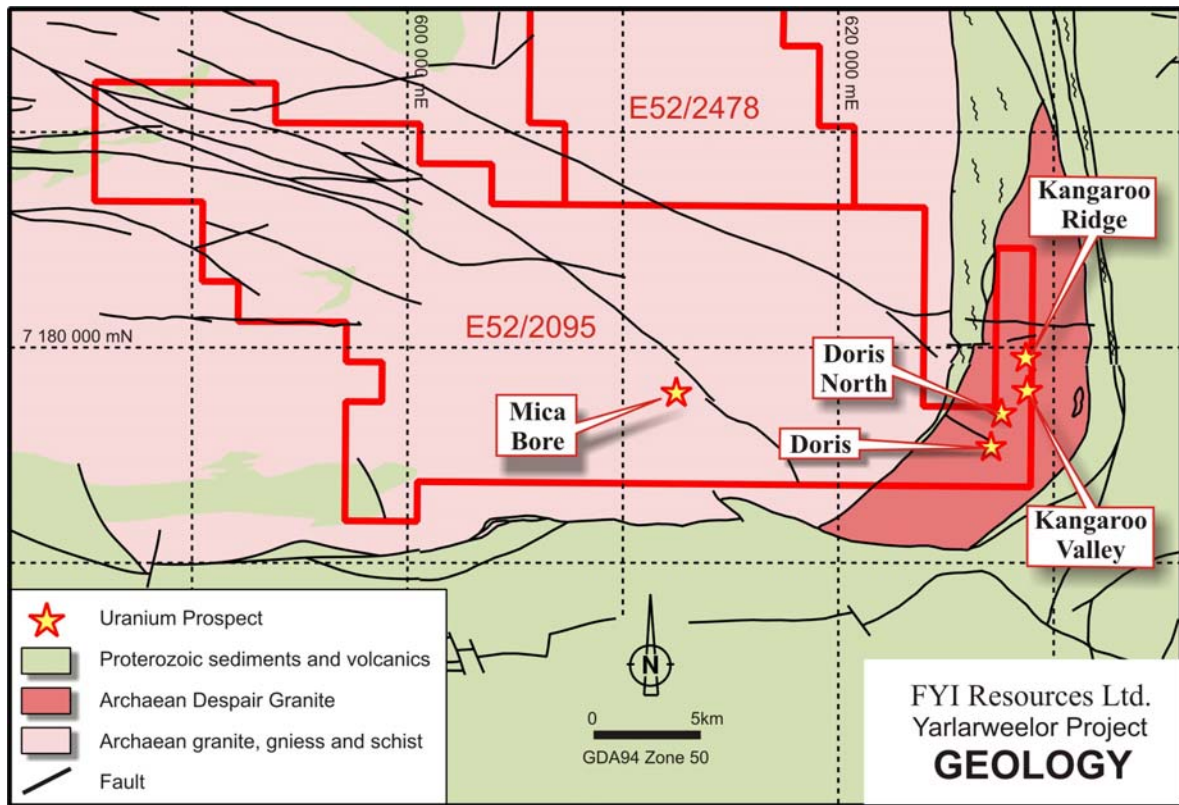
53 Canning Highway, VICTORIA PARK, WA 6100

Postal: PO Box 375, WEST PERTH, WA 6872

Tel: +61 8 9361 3100 Fax: +61 8 9361 3184 Website: www.fyiresources.com.au

ACN 061 289 218

For personal use only



Yarlarweelor Drill Assays

Hole ID	Northing	Easting	Az	Dip	Final Depth (m)	From (m)	Interval (m)	U ₃ O ₈ (ppm)
KANGAROO RIDGE								
KRD10-01	7179320	628793	80	-65	59.8	47.8	7.8	588
					includes	53.8	1.0	1,873
KRD10-02	7179314	628754	130	-60	200.5	125.1	35.0	503
					includes	127.1	5.0	1,069
						142.1	2.0	1,228
						149.1	4.0	1,010
KRD10-03	7179314	628753	135	-70	233.4	ASSAYS PENDING		
DORIS								
DD10-04	7175347	627332	296	-60	158.6	ASSAYS PENDING		

Intersections are an arithmetic average calculated using a lower cut-off of 100ppm U₃O₈. No high cut has been applied.

Maximum internal dilution is 3m @ <100ppm U₃O₈.

Uranium assays were done on 1 metre quarter core samples by sodium peroxide fusion/ICP-MS.

Coordinates : GDA94 zone 50

For personal use only

Due to access problems hole KRD10-02 was drilled oblique to the strike of the mineralized shear and the true width of mineralization is estimated to be 9 metres. The true width of mineralization in KRD10-01 is estimated to be 4 metres. These two intersections are approximately 50m apart with the mineralization currently open along strike and at depth.

The mineralization at Kangaroo Ridge consists of uraninite with minor pyrite, pyrrhotite and magnetite in schist composed of biotite, quartz, carbonate and chlorite. This schist is related to shear zones developed within the Archaean Despair Granite. Results from a previous detailed airborne radiometric survey and geological mapping indicates shear zones with a combined strike length in excess of 25 kilometres exist within the Company's tenements and may be prospective for uranium mineralization.

A program of field checking and sampling of radiometric anomalies at Yarlarweelor is now being undertaken to rank areas for future drilling.

The style of mineralization at Yarlarweelor is different from the majority of Australian uranium occurrences but the widths and grades of mineralization are comparable to those in operating mines and advanced projects in Africa.



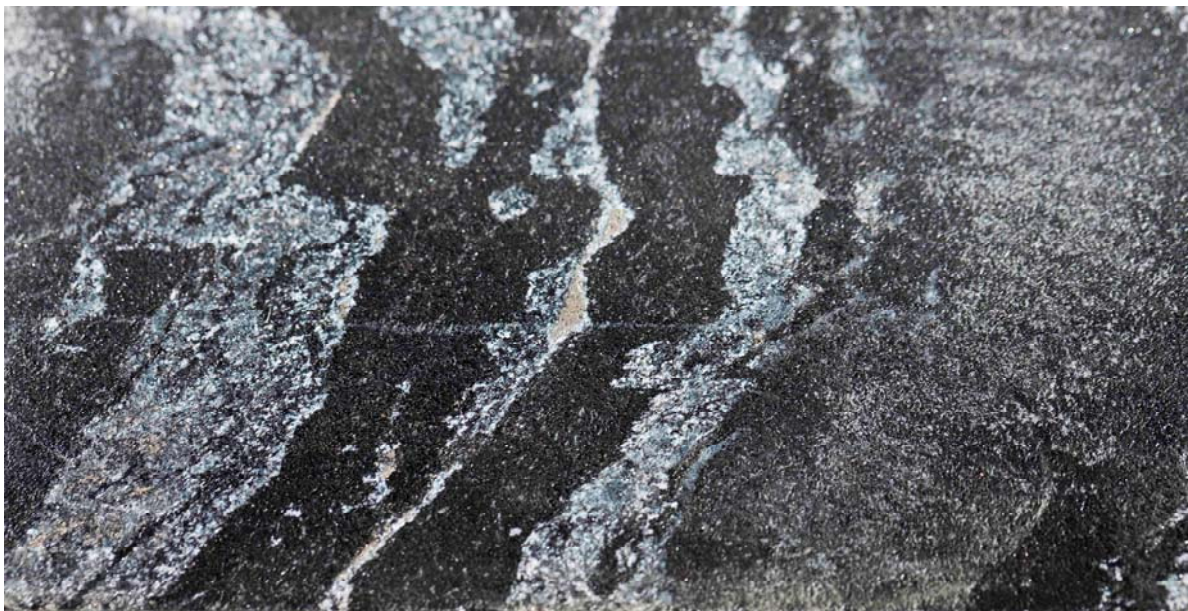
Portion of KRD10-02 intersection of uraninite bearing biotite quartz carbonate schist.

For personal use only



Core photo of KRD10-01 – 30.7 metres - contact of granite (on the right) and chlorite-biotite schist.

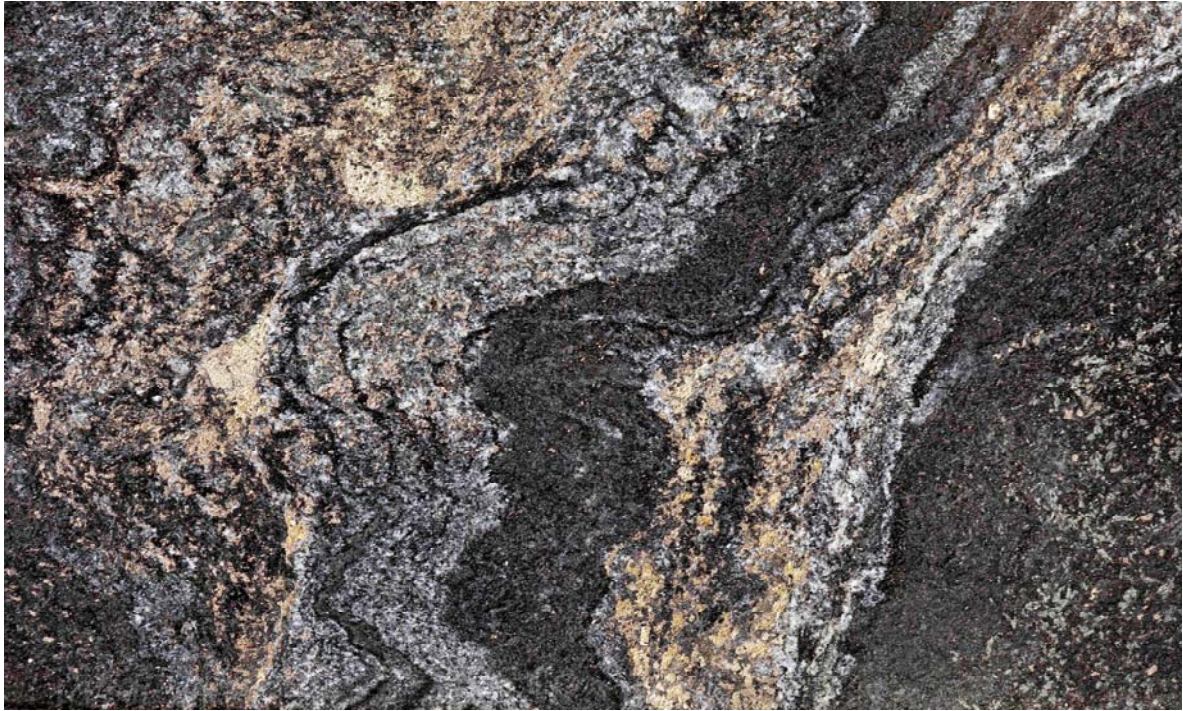
Note: the photo above represents approximately 60mm of core from top to bottom.



Core photo of KRD10-02 – 128.5 metres - banded biotite-quartz-carbonate schist with disseminated pyrite and uraninite.

Note: the photo above represents approximately 50mm of core from top to bottom.

For personal use only



Core photo of KRD10-02 – 128.3 metres – quartz- biotite- schist with bands of pyrite and pyrrhotite with disseminated uraninite.

Note: the photo above represents approximately 50mm of core from top to bottom.

- End -

Further Information:

Adrian Jessup
Executive Director
Tel: (08) 9361 3100

Russell Barnett
Chairman
Tel: (08) 9320 5138

The information in this report that relates to Exploration Results has been compiled by Mr. David Ross B.Sc(Hons), M.Sc. who is an employee of the Empire Resources Limited. He is a member of the Australasian Institute of Mining and Metallurgy and the Australian Institute of Geoscientists. He has sufficient experience which is relevant to the style of mineralization and type of deposit under consideration and to the activity to which he is undertaking to qualify as a Competent Person as defined in the 2004 Edition of the "Australasian Code for Reporting of Exploration Results, Mineral Resources and Ore Reserves". David Ross consents to the inclusion in the public release of the matters based on his information in the form and context in which it appears.

For personal use only