



ACN 092 471 513

ASX Release

Monday 23 May, 2011

**High Grade Copper Mineralisation confirmed at Empire's  
A Zone Prospect at WA Yuinmery project**

Empire Resources Ltd (ASX "ERL") has confirmed significant copper-gold mineralisation at its **A Zone** prospect within the Company's wholly owned Yuinmery project, 80 kilometres southwest of Sandstone in Western Australia.

A recently completed 3 hole Reverse Circulation drilling program has confirmed the continuity of significant copper-gold mineralisation at **A Zone** with a sulphide intersection of **5m @ 2.6% copper, 0.4g/t gold, including 1m @ 5.0% copper, 0.3g/t gold.**

This sulphide mineralisation **remains open at depth** with downhole geophysics showing the above **intersection to be near the top of a large northwesterly plunging sulphide conductor zone.** (See Figure 3)

The **A Zone** prospect lies 1.3km north of Empire's flagship Just Desserts prospect at Yuinmery where the Company has defined a JORC Indicated and Inferred resource of **1,070,000 tonnes at 1.82% copper and 0.78g/t gold.** Any additional copper-gold resources found would further enhance the economic outlook for the Yuinmery project.

Further drilling and geophysics will shortly be undertaken at the A Zone prospect with the aim of outlining a second significant resource of copper-gold mineralisation at Yuinmery.

For further information on the Company visit [www.resourcesempire.com.au](http://www.resourcesempire.com.au)

**David Sargeant  
Managing Director**

David Sargeant – Managing Director  
Adrian Jessup – Executive Director

Phone: +61 8 93613100  
Phone: +61 8 93613116

---

**PRINCIPAL AND REGISTERED OFFICE**

53 Canning Highway  
Victoria Park WA 6100

Tel: +61 (0)8 93613100  
Fax: +61 (0)8 93613184

For personal use only

HOLE ID	NORTH	EAST	DEPTH (m)	AZ	DIP	FROM (m)	TO (m)	LENGTH (m)	Cu GRADE %Cu	Au GRADE g/t Au
<b>A ZONE</b>										
YRC11-01	6838514	685685	179	225	-63	148	153	5	2.56	0.44
					incls	152	153	1	5.00	0.25
YRC11-02	6838542	685656	186	225	-63	156	157	1	1.98	0.11
YRC11-03	6838571	685628	198	225	-63	-	-	-	nsa	

Intersections are an arithmetic average calculated using a 1.0%Cu lower cut-off. No high cut has been applied.

No internal dilution <1.0%Cu.

Assays were done on 1 metre split samples using a 40gm Fire Assay for gold and mixed acid digest/ICP-OES for copper.

Coordinates GDA94 zone 50



Figure 1 : Yuinmery Project location map

**PRINCIPAL AND REGISTERED OFFICE**

53 Canning Highway  
Victoria Park WA 6100

Tel: +61 (0)8 93613100  
Fax: +61 (0)8 93613184

For personal use only

For personal use only

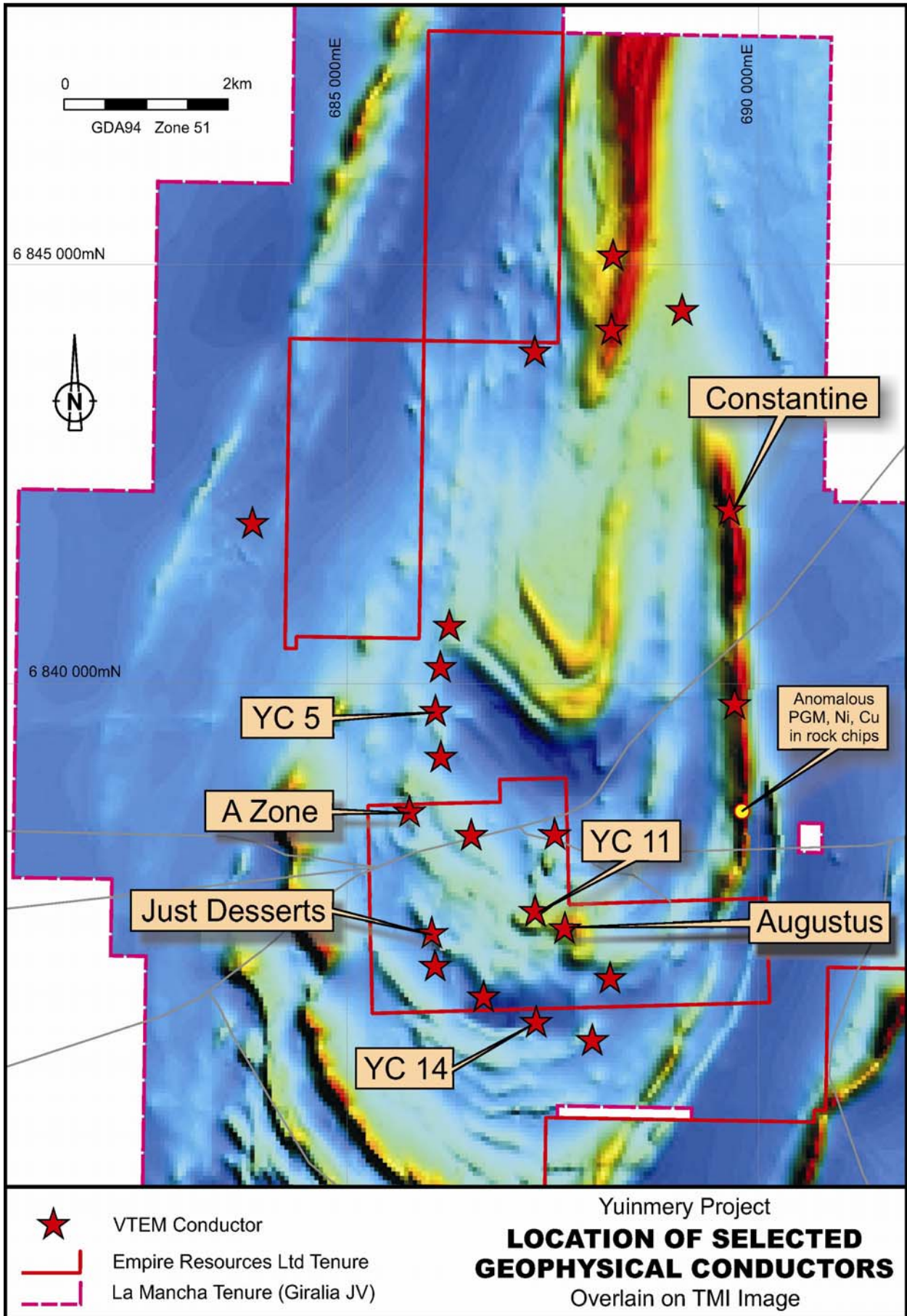


Figure 2

PRINCIPAL AND REGISTERED OFFICE

53 Canning Highway  
Victoria Park WA 6100

Tel: +61 (0)8 93613100  
Fax: +61 (0)8 93613184

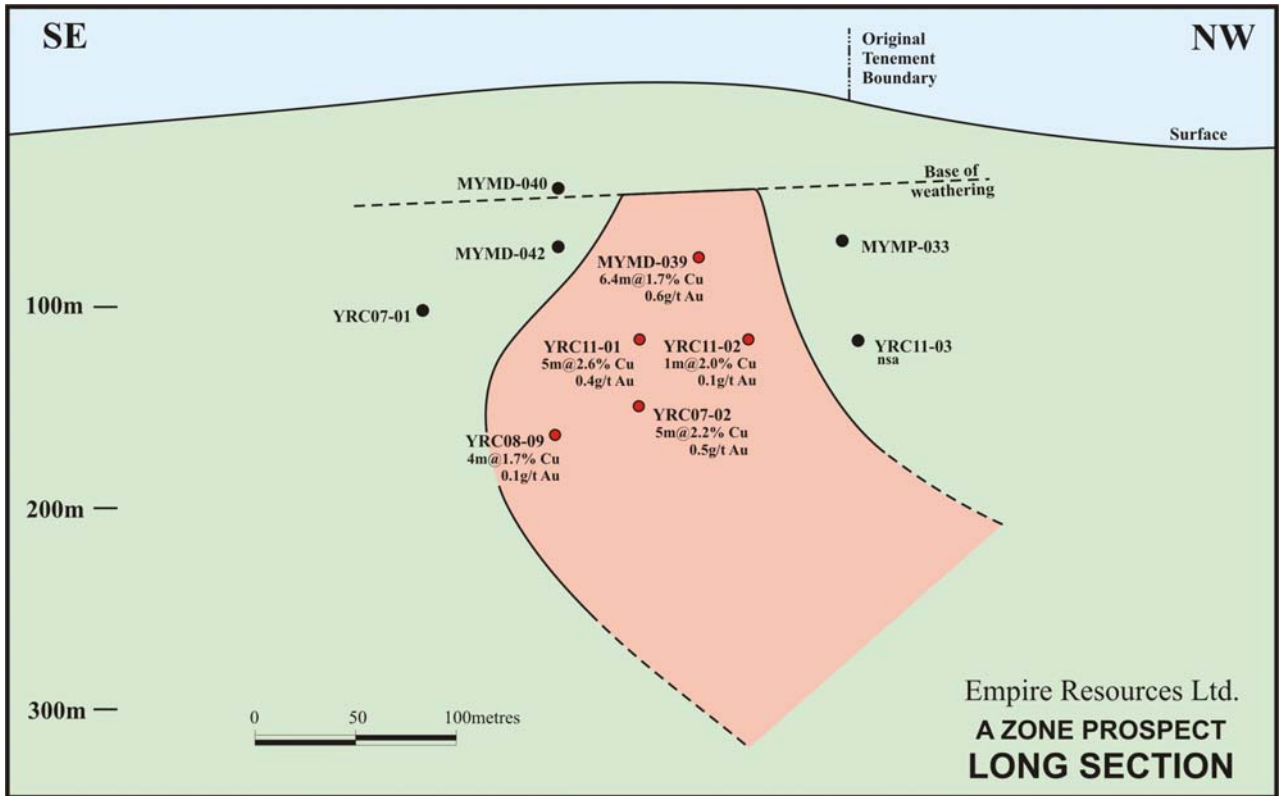


Figure 3

**PRINCIPAL AND REGISTERED OFFICE**

53 Canning Highway  
Victoria Park WA 6100

Tel: +61 (0)8 93613100  
Fax: +61 (0)8 93613184

For personal use only

The information in this report that relates to Exploration Results has been compiled by Mr. David Ross B.Sc(Hons), M.Sc. who is an employee of the Company. He is a member of the Australasian Institute of Mining and Metallurgy and the Australian Institute of Geoscientists. He has sufficient experience which is relevant to the style of mineralization and type of deposit under consideration and to the activity to which he is undertaking to qualify as a Competent Person as defined in the 2004 Edition of the "Australasian Code for Reporting of Exploration Results, Mineral Resources and Ore Reserves". David Ross consents to the inclusion in the public release of the matters based on his information in the form and context in which it appears.

### Notes on the Yuinmery Resource

A resource estimate for the Just Desserts prospect at Yuinmery was completed and announced to the market on 9 April 2009.

There has been no change in the resource since that time.

The mineral resource by category to a depth of 250m below surface is reported below. The resource comprises no oxide mineralization, only transitional and fresh.

#### Just Desserts Classified Mineral Resources – March 2009

	Category	Tonnes	Grade*	Grade*	Grade*
			Cu%	Au g/t	Ag g/t
<b>1%Cu cutoff</b>	Indicated	104,000	1.65	0.86	1.32
	Inferred	966,000	1.84	0.77	2.12
	<b>TOTAL</b>	<b>1,070,000</b>	<b>1.82</b>	<b>0.78</b>	<b>2.06</b>
<b>1.5%Cu cutoff</b>	Indicated	46,000	2.11	1.14	1.58
	Inferred	536,000	2.34	0.92	2.68
	<b>TOTAL</b>	<b>582,000</b>	<b>2.33</b>	<b>0.93</b>	<b>2.61</b>

*\*High assays have been cut to 9%Cu, 20g/tAu and 10g/tAg.*

Resource modelling consultants Datageo calculated a JORC compliant in situ resource estimate, utilising all drill hole information available on Prospecting Licence P57/1215 up to the end of June 2008.

The resource grade was estimated using ordinary kriging based on the drill hole data composited down hole to 1m intervals within constraining shapes representing the mineralisation. Assumed specific gravity values used were:- transitional 2.7t/m<sup>3</sup>; fresh 3.2t/m<sup>3</sup>.

---

#### PRINCIPAL AND REGISTERED OFFICE

53 Canning Highway  
Victoria Park WA 6100

Tel: +61 (0)8 93613100  
Fax: +61 (0)8 93613184

For personal use only