

ACN 092 471 513

ASX/Media Release

Thursday December 22, 2011

## A Zone Copper-Gold Prospect Empire's Mineralization Continues At Depth

Empire Resources Ltd has confirmed deeper copper-gold mineralization at its A Zone prospect within the Company's Yuinmery copper-gold project, 80 kilometres southwest of Sandstone in Western Australia.

Intersections from two reverse circulation (RC) drill holes assayed the following grades from approximately 200 metres and 220 metres vertically below surface:

- ▶ **10m @ 1.8% Cu, 0.87g/t Au** from 222m in hole YRC11-39,  
which includes **6m @ 2.6% Cu, 1.05g/t Au** from 222m.
- ▶ **12m @ 1.8% Cu, 0.46g/t Au** from 240m in hole YRC11-40,  
which includes **7m @ 2.2% Cu, 0.56g/t Au** from 241m.

The mineralization is still open at depth. These drill holes are part of ongoing RC and diamond drilling programs currently testing a number of VMS targets at Yuinmery.

Empire's Managing Director, Mr David Sargeant said:

*"These latest copper intersections confirm the potential of the A Zone prospect at Yuinmery. They show the tenor of mineralization increasing with depth beyond 200m vertical depth which is consistent with our view that A Zone is part of a major mineralized system. This will be further tested by deeper drilling in the area next year."*

*"The attractive intersections of good copper and gold grades, together with the known mineralization at Just Desserts, reinforces our belief that the region has the potential to host a number of significant VMS mineralised zones."*

For further information on the Company, visit [www.resourcesempire.com.au](http://www.resourcesempire.com.au)

David Sargeant – Managing Director  
Adrian Jessup – Executive Director

Phone: +61 8 9361 3100  
Phone: +61 8 9361 3100

For personal use only

The information in this report that relates to Exploration Results has been compiled by Mr. David Ross B.Sc(Hons), M.Sc. who is an employee of the Company. He is a member of the Australasian Institute of Mining and Metallurgy and the Australian Institute of Geoscientists. He has sufficient experience which is relevant to the style of mineralization and type of deposit under consideration and to the activity to which he is undertaking to qualify as a Competent Person as defined in the 2004 Edition of the "Australasian Code for Reporting of Exploration Results, Mineral Resources and Ore Reserves". David Ross consents to the inclusion in the public release of the matters based on his information in the form and context in which it appears.

Prospect	Hole ID	North	East	Az	Dip	Final Depth(m)	From (m)	Interval (m)	% Cu	g/t Au	% Zn	g/t Ag
A Zone	YRC11-30D	6838689	685691	225	-55	349	205	2	0.05	0.04	1.30	-
							218	1	1.16	0.17	0.04	1.0
A Zone	YRC11-31	6838610	685729	225	-55	240	189	3	0.35	0.73	0.05	-
A Zone	YRC11-32D	6838695	685643	225	-55		Hole to be completed					
A Zone	YRC11-33D	6838723	685729	225	-55	346	NSA					
YC6A	YRC11-34	6839020	685950	270	-55	228	Assays pending					
Trajan	YRC11-35	6836693	686110	225	-57	140	79	3	1.08	1.77	0.07	3.7
Trajan	YRC11-36	6836677	686159	225	-57	180	NSA					
Trajan	YRC11-37	6836728	686156	225	-55	200	147	3	1.51	1.37	0.08	5.0
Trajan	YRC11-38	6836724	686101	225	-57	180	140	1	0.83	0.05	0.03	1.0
A Zone	YRC11-39	6838640	685757	225	-55	300	222	10	1.84	0.87	0.07	2.3
						incls	222	6	2.58	1.05	0.06	3.0
A Zone	YRC11-40	6838669	685730	225	-55	300	240	12	1.79	0.46	0.04	1.5
						incls	241	7	2.22	0.56	0.05	2.0
A Zone	YRC11-41D	6838690	685754	225	-55		Hole to be completed					
A Zone	YRC11-42D	6838668	685786	225	-55		Hole to be completed					

Northings and eastings are GDA94, MGA zone 50 coordinates.

Intersections are an arithmetic average calculated using either a 0.5%Cu, 1.0% Zn or 0.5g/tAu lower cut-off. No high cut has been applied. NSA : no significant assays.

Maximum internal dilution of 2m @ <0.5%Cu or <0.5g/tAu.

Analyses were done on 1 metre split samples using a 40gm Fire Assay for gold and mixed acid digest/ICP-AES/MS for copper, zinc and silver.

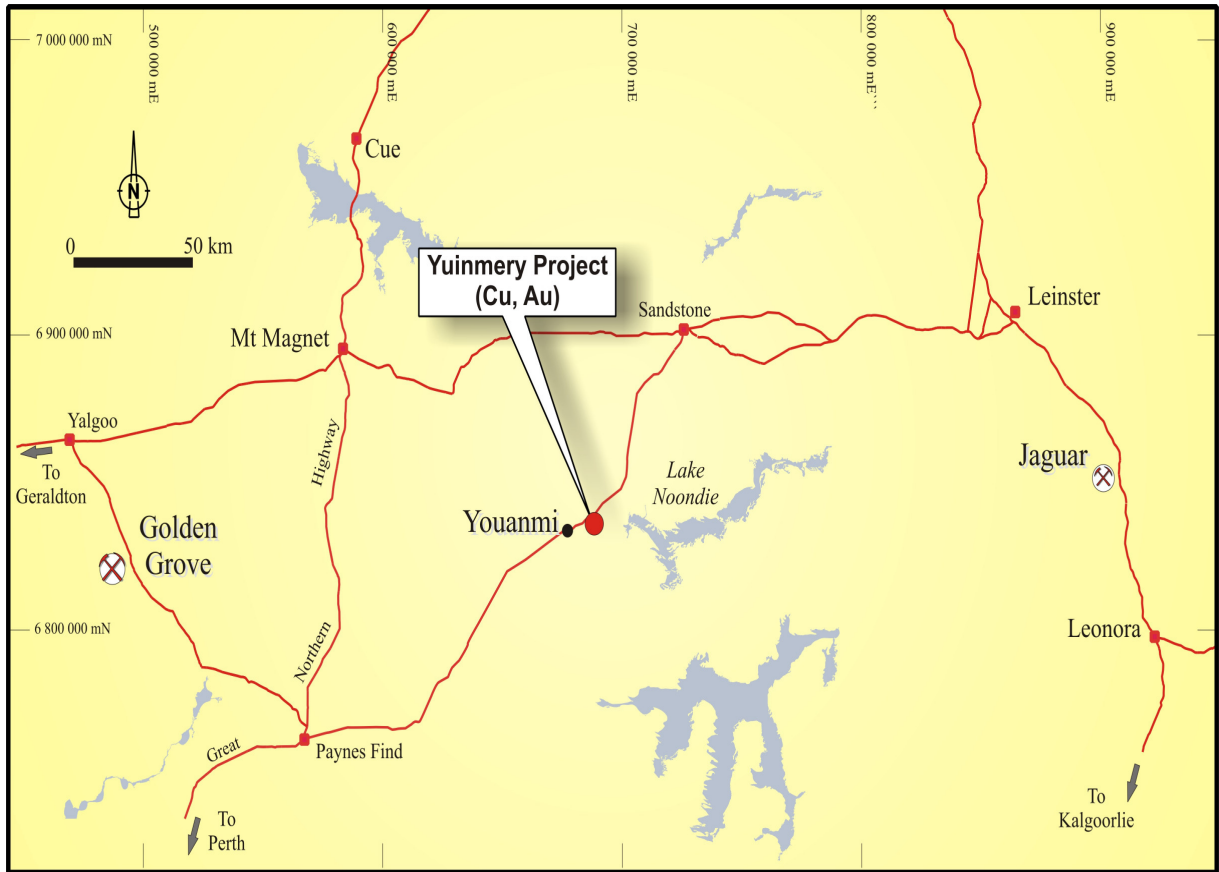


Figure 1: Yuiumery Project location map

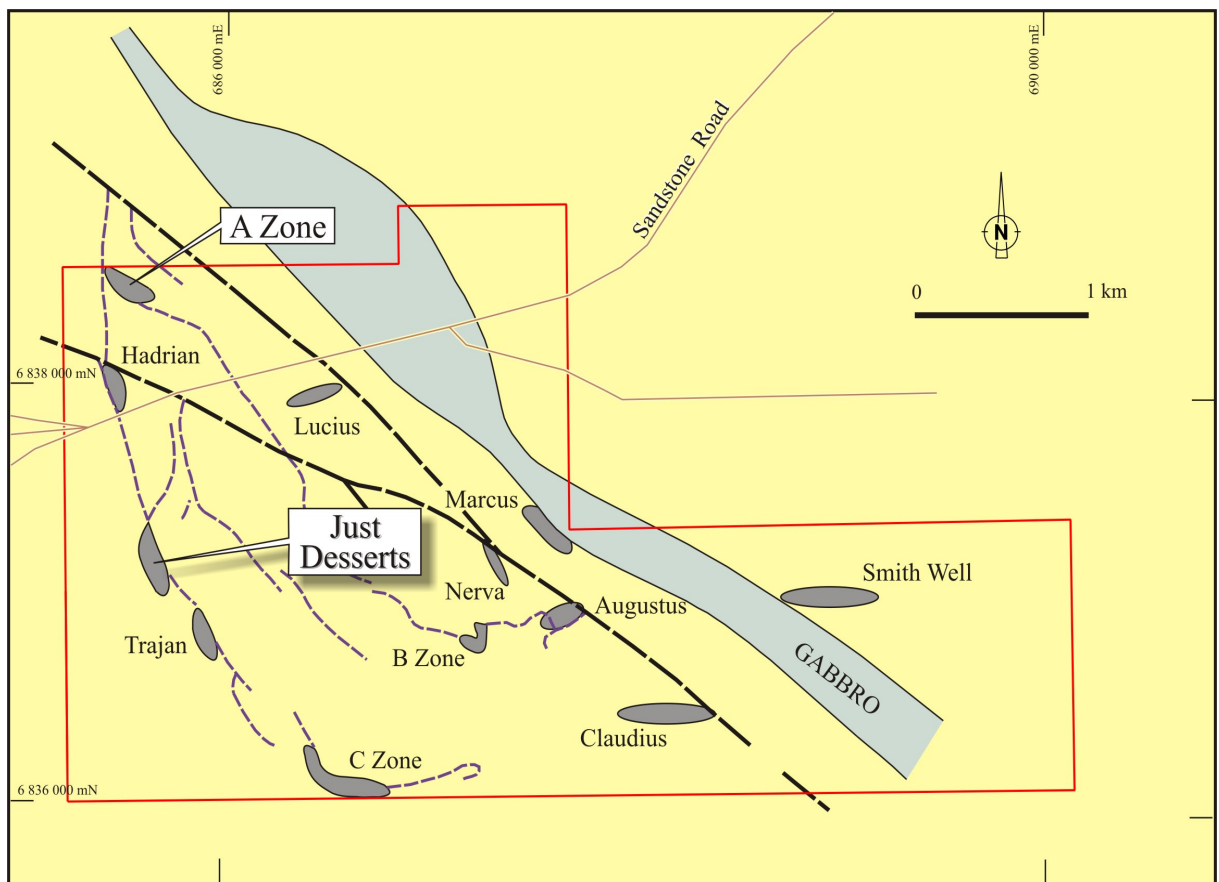


Figure 2: Yuiumery Prospect Locations

For personal use only